

MODEL 9-750
WATER COOLED WELD HEAD

ILLUSTRATED PARTS BREAKDOWN MANUAL

To be used as reference only

**MODEL 9-750
IPB Notice and Revision History**

This document and the information contained herein is the property of Arc Machines, Inc. It is proprietary and submitted and received in confidence. It shall be used only for the purpose for which it is submitted and shall not be copied in whole or in part without the prior express written permission of Arc Machines, Inc. The information in this document has been carefully reviewed and is believed to be accurate. However, no responsibility is assumed for inaccuracies. Information and part numbers in this document are subject to change and Arc Machines, Inc. reserves the right to change required data without notice.



WARNING



The nature of the GTAW process creates some POTENTIAL HAZARDS. In accordance with international safety regulations the EXCLAMATION SYMBOL indicates that this equipment is considered HAZARDOUS. The LIGHTNING FLASH SYMBOL indicates that there are potential electrical hazards. The display of these symbols makes it the OPERATOR'S RESPONSIBILITY TO ENSURE THAT THEY HAVE BEEN MADE AWARE OF and shall observe the hazardous conditions.

	<p>WARNING: AMI factory training is essential for all Maintenance Technicians who operate AMI equipment. Do not operate or service this equipment without proper AMI approved training.</p>
	<p>WARNING: Keep hands and fingers clear from moving parts such as fans, gears, rotors, Wire Feed, Weld Head Travel, i.e. Oscillation (OSC) and Arc Voltage Control (AVC) mechanisms</p> <p>Weld Head AVC and Oscillator Slide Assemblies develop high forces and it is possible, by their nature of operation, to harm any object or body part that may get into these areas. USE EXTREME CAUTION!</p>
	<p>Electrical Shock Hazard: Always disconnect weld heads when servicing internal components or opening housing covers for access.</p>

Inc. All rights reserved.
Publication date: First Edition – June 5, 2007
Copyright 2007 by Arc Machines, Inc.

REV	ECO #	CHANGE DESCRIPTION	DATE	APR
-	N/A		12/18/06	LEC
A	5183	IPB 0905234, ITEM 3 CHANGED TO PR07-0,25NP FROM SPSO.0781x0.25	10/31/08	BF
B	5579	Added rev F of 750015 and Wiring Diagram	1/18/10	DC
C	5753	Updated IPB 090800 and Table of Contents	10/6/10	GB/DC

To be used as reference only

TABLE OF CONTENTS

DATE EFFECTIVE: 24 January 2005

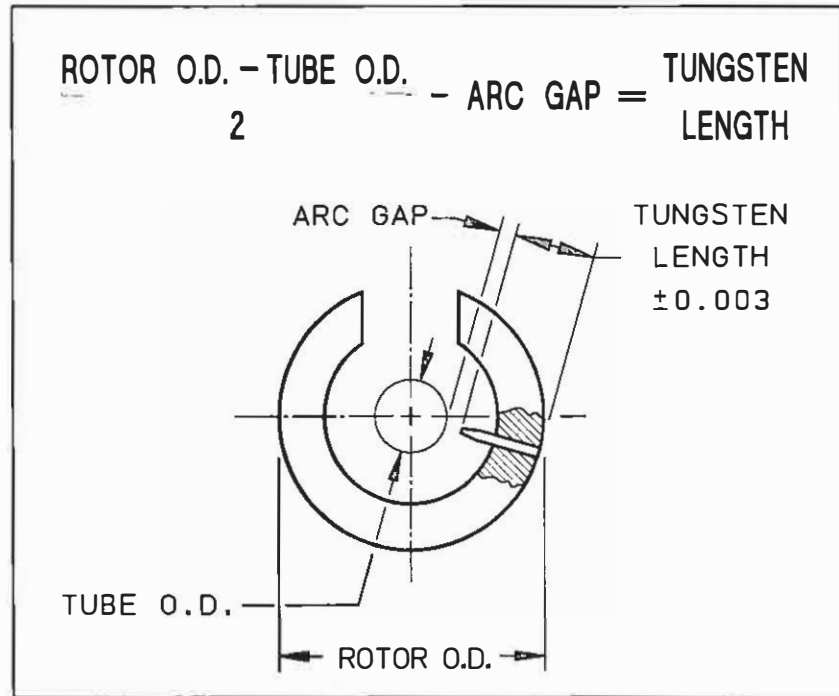
PRODUCT MODEL: 9-750
MANUAL NUMBER: 730118

<u>IPB NUMBER</u>	<u>DESCRIPTION</u>
750015	MODEL 9 ELECTRODE DIMENSIONS
0901133	WELD HEAD ASSEMBLY
090787	ROTOR ASSEMBLY
0905232	COVER FLIP TOP ASSEMBLY
0905234	CLAMP ASSY HOUSING HSG SIDE
0905235	CLAMP ASSY COVER SIDE
090800	CABLE ASSEMBLY M9
0905119	LOCATING ARM KIT / INSTALLATION (OPTION)
0901103	MODEL 9M-750 WELD HEAD ASSEMBLY
0905185	KIT CONVERSION M9-750 TO M9M-750 (OPTION)
0907102	HOLDER ELECTRODE EXTENDER ASSEMBLY
DWG #750028	KIT CONVERSION M9-750 TO M9CT-750 INSTRUCTIONS (OPTION)
175144-06	MODEL 9-750 WELD HEAD WIRING DIAGRAM

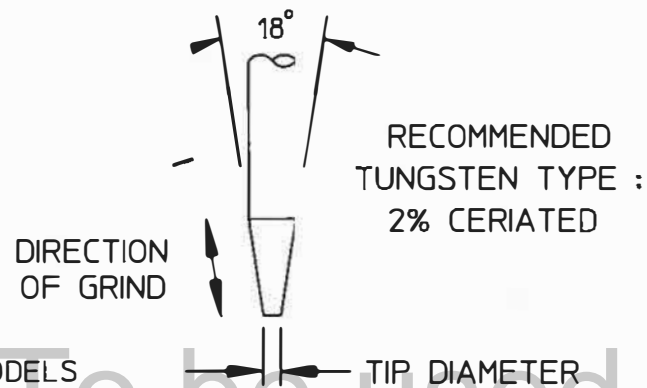
To be used as reference only

ELECTRODE DIMENSIONS

ROTOR DIAMETER	
MODEL NO.	ROTOR O.D.
9-250	0.802
9-500/4-500	1.388
9-675	1.715
9M-750	1.312
9-750	2.000
9-1500	3.187
9AF-1500	2.252
9E-1500	2.687
8-2000	3.450
9-2500	4.380
9AF-2500	3.156
9E-2500	4.280
* 9-3500	5.380
9E-3500	5.310
8-4000	5.310
* 9-4500	6.875
9ER-4500	5.776
8-6625	8.094
* 9-7500	10.440
9E-7500	9.375
* FOR HEADS USING OPTIONAL TUNGSTEN EXTENDER, SEE PAGE 2.	

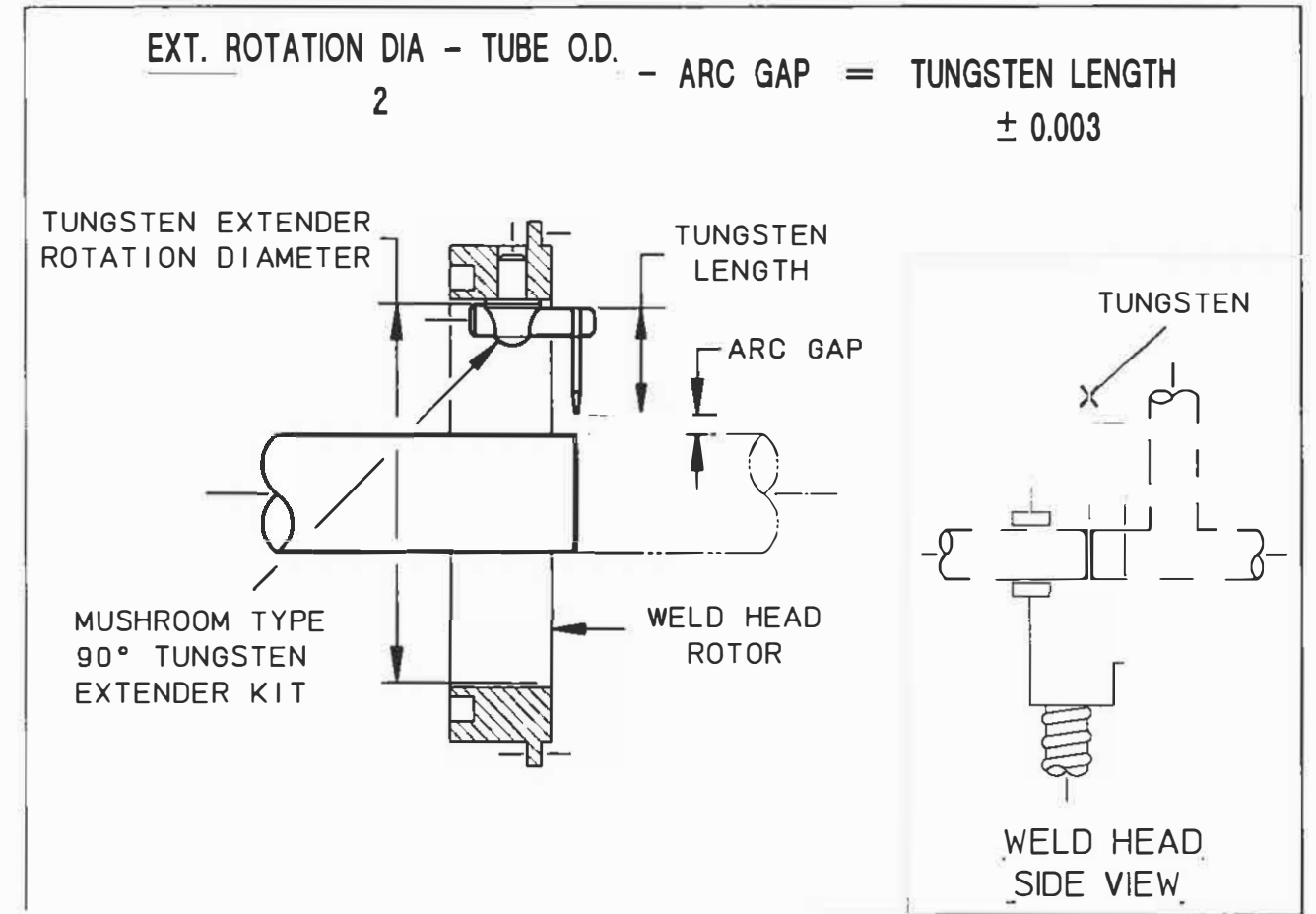


TUBE/PIPE WALL THICKNESS	RECOMMENDED ARC GAP	RECOMMENDED TIP DIA.
0.020/0.035	0.030	0.020
0.049/0.085	0.050	0.030
0.091/0.154	0.070	0.040



- NOTES:
1. RECOMMENDED ARC GAP FOR MODELS 4-500, 9-250 & 9-500 IS 0.045 MAXIMUM.
 2. IN INSTANCES WHERE OUT-OF-ROUNDNESS ON THIN-WALLED TUBING OCCURS (NORMALLY 2,500 O.D. OR LARGER), A 0.070 ARC GAP IS RECOMMENDED.
 3. DIMENSIONS ARE IN INCHES.

TUNGSTEN LENGTH CALCULATION FOR TUNGSTEN EXTENDERS

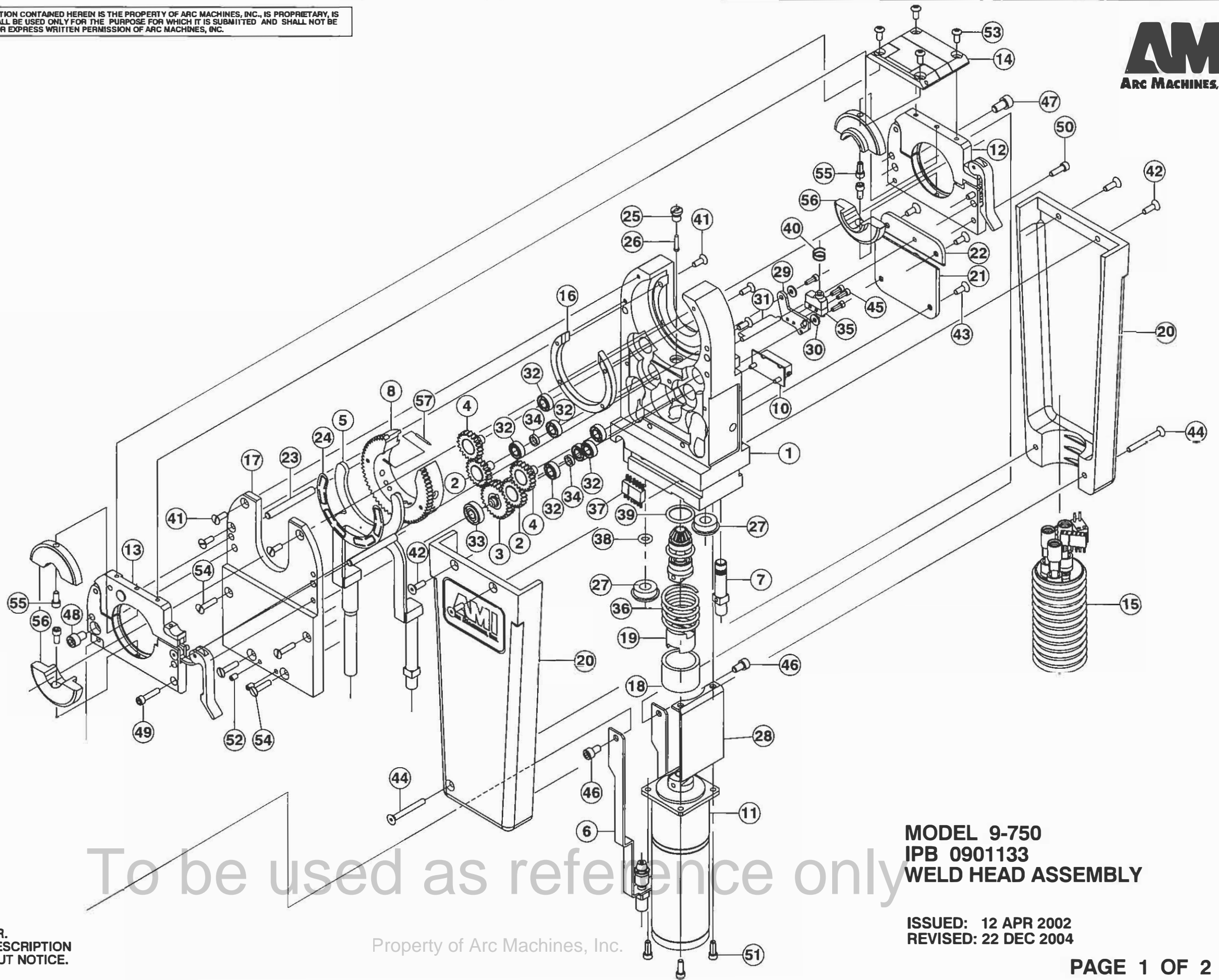
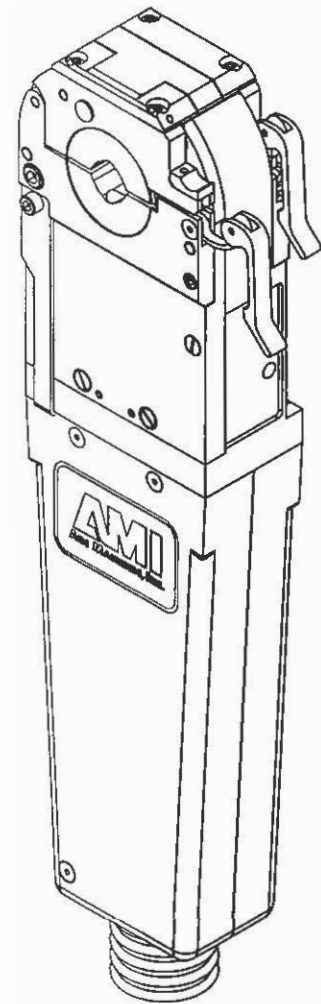


WELD HEAD MODEL NO.	KIT WITH 1/16 TUNGSTEN HOLDER PART NO.	KIT WITH 3/32 TUNGSTEN HOLDER PART NO.	TUNGSTEN EXTENDER ROTATION DIA.
9-1500	13090796-01	13090796-02	2.031
9-2500	13090796-05	13090796-06	3.156
9-3500	13090796-05	13090796-06	4.031
9-4500	13090796-03	13090796-04	4.920
9-7500	13090796-05	13090796-06	8.280

NOTES:

1. PART NUMBERS SHOWN ARE FOR REFERENCE ONLY AND ARE SUBJECT TO CHANGE.
2. CONTACT AMI SALES OR SERVICES FOR SPECIFIC PART NUMBER.

THIS DOCUMENT OR DRAWING AND THE INFORMATION CONTAINED HEREIN IS THE PROPERTY OF ARC MACHINES, INC., IS PROPRIETARY, IS SUBMITTED AND RECEIVED IN CONFIDENCE, SHALL BE USED ONLY FOR THE PURPOSE FOR WHICH IT IS SUBMITTED AND SHALL NOT BE COPIED IN WHOLE OR IN PART WITHOUT THE PRIOR EXPRESS WRITTEN PERMISSION OF ARC MACHINES, INC.

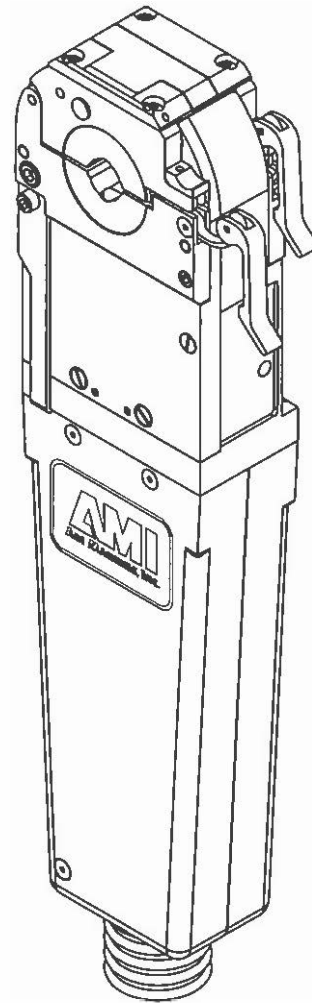


MODEL 9-750
IPB 0901133
WELD HEAD ASSEMBLY

ISSUED: 12 APR 2002
REVISED: 22 DEC 2004

TO ORDER USE PART NUMBER.
PRICE, PART NUMBER AND DESCRIPTION
SUBJECT TO CHANGE WITHOUT NOTICE.

Property of Arc Machines, Inc.



ITEM NO.	QTY.	PART NO.	DESCRIPTION	ITEM NO.	QTY.	PART NO.	DESCRIPTION
1	1	42090185-01	HOUSING MAIN	37	1	7051	CONN 5 PIN MALE
2	2	13090618-01	GEAR IDLER ASSY	38	1	2-010-S604-70	O RING .238 ID .070 W SIL
3	1	13090618-02	GEAR DRIVE ASSY	39	1	2-014-S604-70	O RING .489 ID .070 W VITON
4	2	13090618-03	GEAR IDLER ASSY	40	1	MM-9	SPRING CPRSN .25D .31L .020W
5	1	130907123-01	CONDUCTOR SHOE BRAZED ASSY	41	7	SFL04-40-0.31NY	SCREW FLH SLT 4-40 5/16 L NYL
6	1	13090750-01	GROUND STRAP	42	4	SFS04-40-0.37NP	SCREW FLH SKT 4-40 3/8 L
7	1	13090803-01	TUBE FTG GAS	43	4	SFS04-40-0.31NP	SCREW FLH SKT 4-40 5/16 L
8	1	13090787-01	ROTOR ASSY	44	2	SFS04-40-1.00NP	SCREW FLH SKT 4-40 1.00 L
9	1	13090602-07	GEAR PINION DRIVE ASSY	45	4	SCS02-56-0.31NP	SCREW CAP SKT 2-56 5/16 L
10	1	130901132-01	RETAINER TRIM POT ASSY	46	2	SCS06-32-0.25SP	SCREW CAP SKT 6-32 1/4 SIL PL
11	1	13090602-01	MOTOR DRIVE ASSY	47	1	SCS08-32-0.31NP	SCREW CAP SKT 8-32 5/16 L
12	1	130905234-01	CLAMP HOUSING HOUSING SIDE	48	1	SCS08-32-0.25NP	SCREW CAP SKT 8-32 1/4 L
13	1	130905235-01	CLAMP ASSY COVER SIDE	49	1	SCS04-40-0.50NP	SCREW CAP SKT 4-40 1/2L
14	1	130905232-01	COVER FLIP TOP ASSY	50	1	SCS04-40-0.37NP	SCREW CAP SKT 4-40 3/8 L
15	1	13090800-01	CABLE M9 10 FT	51	4	SCS04-40-0.31NP	SCREW CAP SKT 4-40 5/16 L
16	1	420907123-01	GUIDE RING	52	2	SSS04-40-18NPCU	SCREW SET SKT 6-32 3/16L NY PT
17	1	42090183-01	COVER HOUSING	53	4	SBS04-40-0.25NP	SCREW BTH SKT 4-40 1/4 L
18	1	42090602-04	SPACER SPRING	54	4	SFL04-40-0.50NY	SCREW FLH SLT 4-40 1/2 L NYL
19	1	42090602-03	COUPLING INSULATING	55	4	SCS04-40-0.25NP	SCREW CAP SKT 4-40 1/4 L
20	2	42090104-01	HANDLE ONE-HALF	56	4	420905214-00 (REF.)	CLAMP INSERT (ORDER BY SIZE)
21	1	42091106-01	COVER LIMIT SWITCH LARGE CLEAR	57	1	ELECTRODE	(REF.)
22	1	42091106-02	COVER LIMIT SWITCH SMALL CLEAR				
23	2	42090164-08	PIN .156D 1.4L 9-750				
24	1	420907216-01	PLATE BACKING				
25	1	42090716-02	BUSHING PUSH ROD				
26	1	42090716-01	PUSH ROD LIMIT SW				
27	2	420901126-02	GROMMET				
28	1	42091102-04	INSULATOR SKIRT				
29	1	42091103-01	PLATE MTG LIMIT SWITCH				
30	2	W02ZP-FL	WASHER FL # 2				
31	1	42091107-01	LEVER LIMIT SWITCH				
32	7	SSRI-6632LLRA3P25LY[BEARING BALL .18 .37 [15]				
33	1	SSR-3LLRA3P25LY13	BEARING BALL .18 .50				
34	2	DB6D9	SPACER SHAFT .18ID .25D .062T				
35	1	MMGGD1DOC	SWITCH LIMIT PLUNGER				
36	1	S-939	SPRING CPRSN .81D .70L .072W				

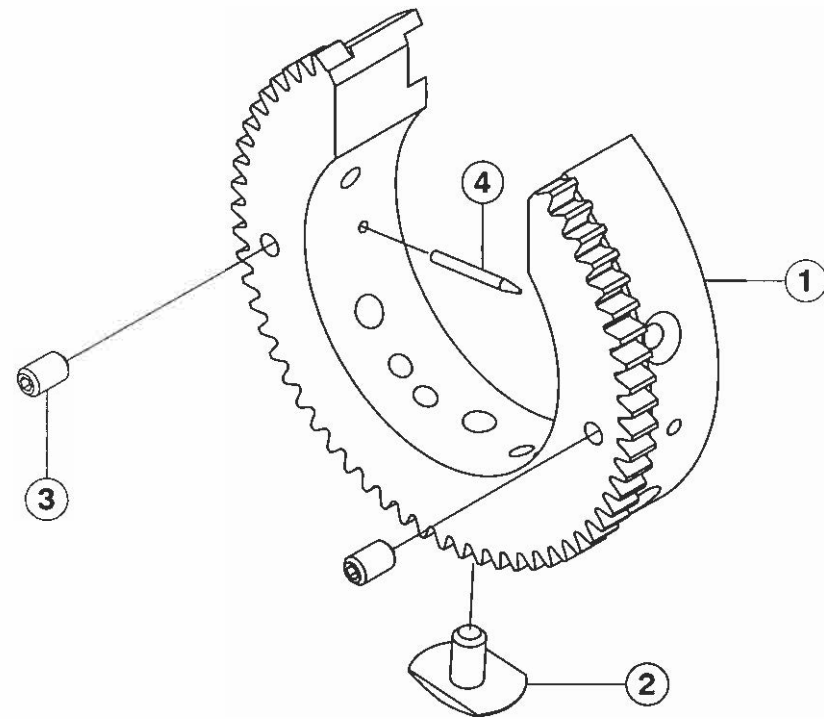
To be used as reference only

MODEL 9-750
IPB 0901133
WELD HEAD ASSEMBLY

TO ORDER USE PART NUMBER.
PRICE, PART NUMBER AND DESCRIPTION
SUBJECT TO CHANGE WITHOUT NOTICE.

Property of Arc Machines, Inc.

ISSUED: 12 APR 2002
REVISED: 22 DEC 2004



ITEM NO.	QTY.	PART NO.	DESCRIPTION
1	1	420907164-01	ROTOR M9-750
2	1	420907156-02	CAM LIMIT SWITCH (MODIFIED)
3	2	SSS04-40-18NPCU	SCREW SET SKT 4-40 3/16 L CUPT
4	1	ELECTRODE	(REF.)

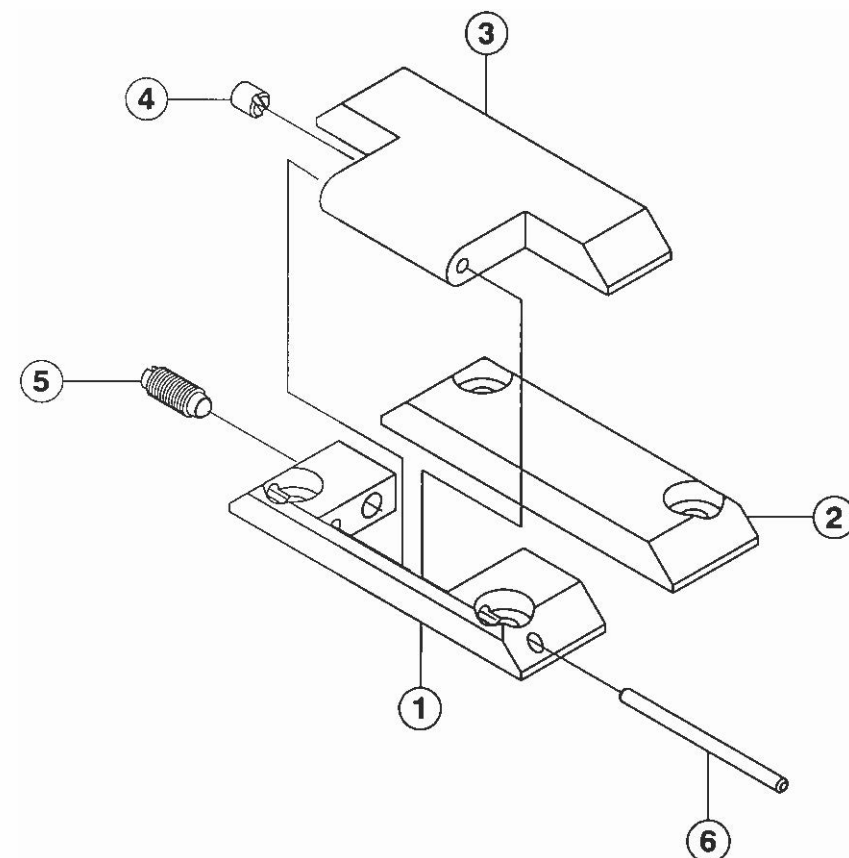
To be used as reference only

MODEL 9-750
IPB 090787
ROTOR ASSEMBLY

TO ORDER USE PART NUMBER.
PRICE, PART NUMBER AND DESCRIPTION
SUBJECT TO CHANGE WITHOUT NOTICE.

Property of Arc Machines, Inc.

ISSUED: 4 JAN 2005
REVISED:



ITEM NO.	QTY.	PART NO.	DESCRIPTION
1	1	420905361-01	COVER FRAME FLIP TOP
2	1	420905361-02	COVER FIXED FLIP TOP
3	1	420905361-03	COVER HINGED FLIP TOP
4	1	CL-2-BD	BALL DETENT
5	1	CL-15-SBP-1	PLUNGER BALL SS 6-40 X 5/16 LONG
6	1	PD06-1.00SS	PIN DOWEL 1/16D 1.0L SST

To be used as reference only

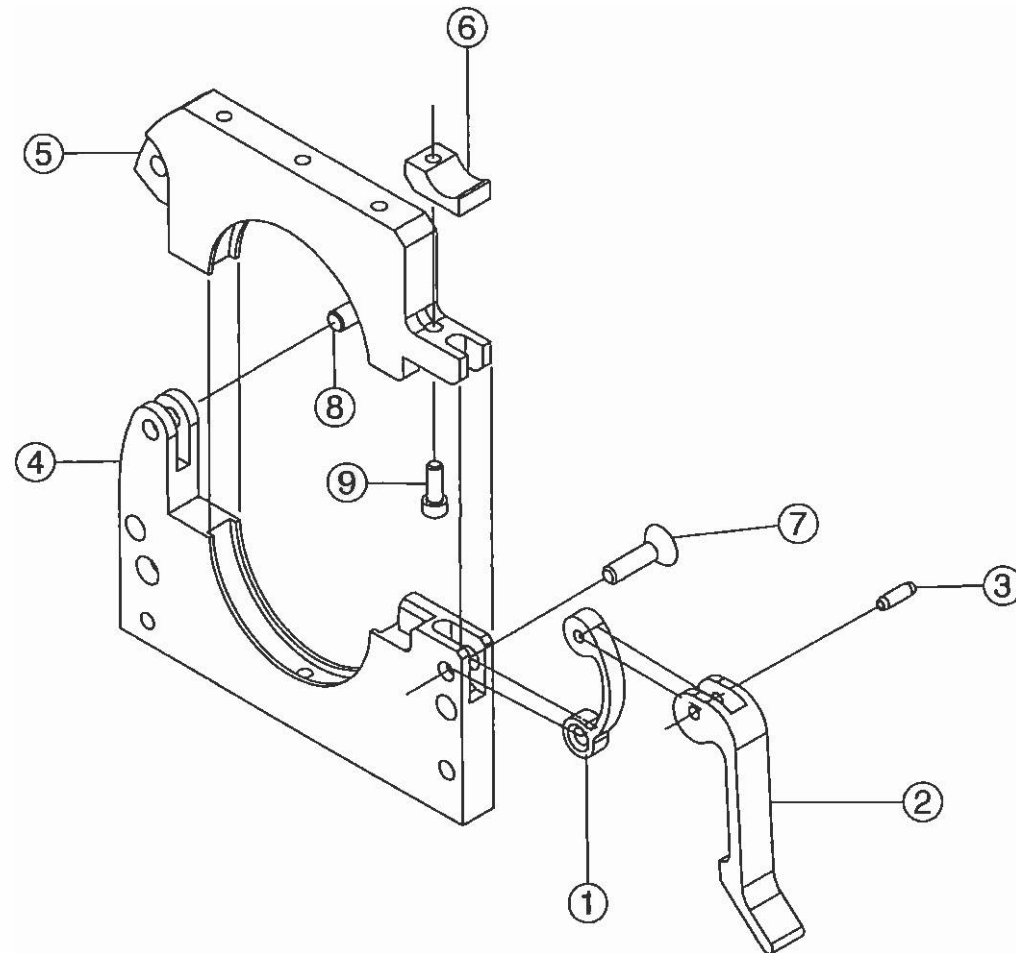
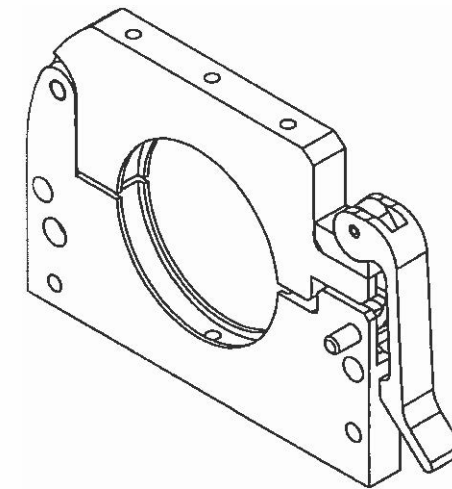
MODEL 9-750
IPB 0905232
COVER FLIP TOP ASSEMBLY

TO ORDER USE PART NUMBER,
PRICE, PART NUMBER AND DESCRIPTION
SUBJECT TO CHANGE WITHOUT NOTICE.

Property of Arc Machines, Inc.

ISSUED: 4 JAN 2005
REVISED:

THIS DOCUMENT OR DRAWING AND THE INFORMATION CONTAINED HEREIN IS THE PROPERTY OF ARC MACHINES, INC., IS PROPRIETARY, IS SUBMITTED AND RECEIVED IN CONFIDENCE, SHALL BE USED ONLY FOR THE PURPOSE FOR WHICH IT IS SUBMITTED AND SHALL NOT BE COPIED IN WHOLE OR IN PART WITHOUT THE PRIOR EXPRESS WRITTEN PERMISSION OF ARC MACHINES, INC.



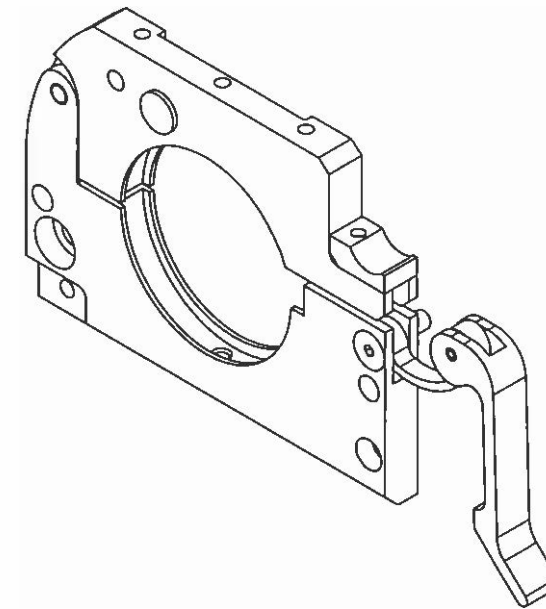
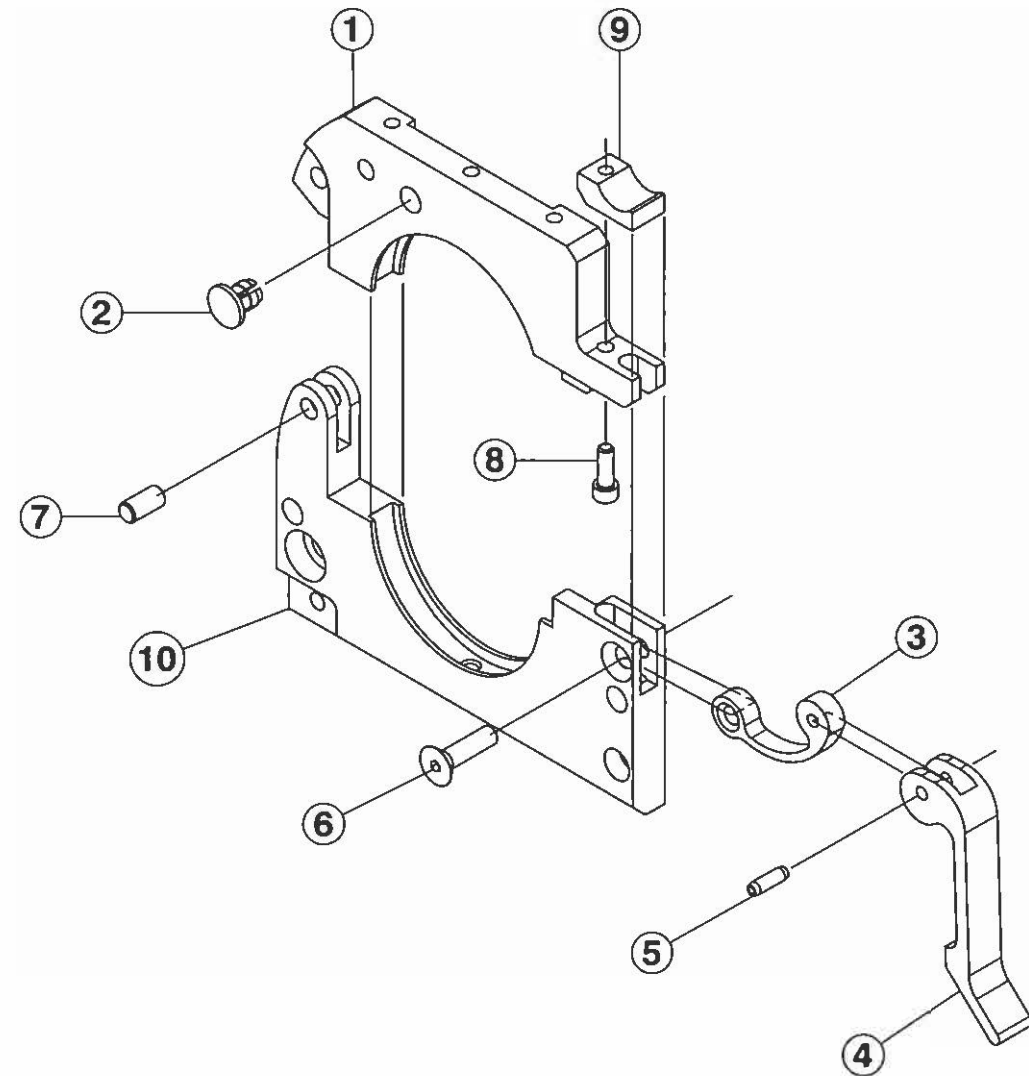
ITEM NO.	QTY.	PART NO.	DESCRIPTION
1	1	420905368-01closed	LATCH SPRING
2	1	420905368-02	LATCH
3	1	PR07-0, 25NP	PIN ROLL 5/64D 1/4L
4	1	420905237-01	HOUSING CLAMP LWR REAR HSG SIDE
5	1	420905366-01	CLAMP HOUSING UPPER
6	1	220905407-01	INSERT OVERCENTER
7	1	SFS04-40-0,43NP	SCREW FLH SKT 4-40 7/16 L
8	1	D14-6	PIN DOWEL 1/8D 1/4L
9	1	SCS02-56-0,31NP	SCREW CAP SKT 2-56 5/16 L

To be used as reference only

MODEL 9-750
 IPB 0905234
 CLAMP ASSY HOUSING HSG SIDE

ISSUED: 12 DEC 2006
 REVISED: 31 OCT 2008

TO ORDER USE PART NUMBER.
 PRICE, PART NUMBER AND DESCRIPTION
 SUBJECT TO CHANGE WITHOUT NOTICE.



ITEM NO.	QTY.	PART NO.	DESCRIPTION
1	1	420905367-01	CLAMP UPPER COVER
2	1	420905221-04	PLUG
3	1	420905368-01	LATCH SPRING
4	1	420905368-02	LATCH
5	1	SPS 0.0781x0.25	PIN ROLL 5/64D 1/4L
6	1	SFS04-40-0,43NP	SCREW FLH SKT 4-40 7/16L
7	1	D14-6	PIN DOWEL 1/8D 1/4L
8	1	SCS02-56-0.25NP	SCREW CAP SKT 2-56 1/4L
9	1	220905407-01	INSERT OVERCENTER
10	1	420905236-01	CLAMP HOUSING LOWER

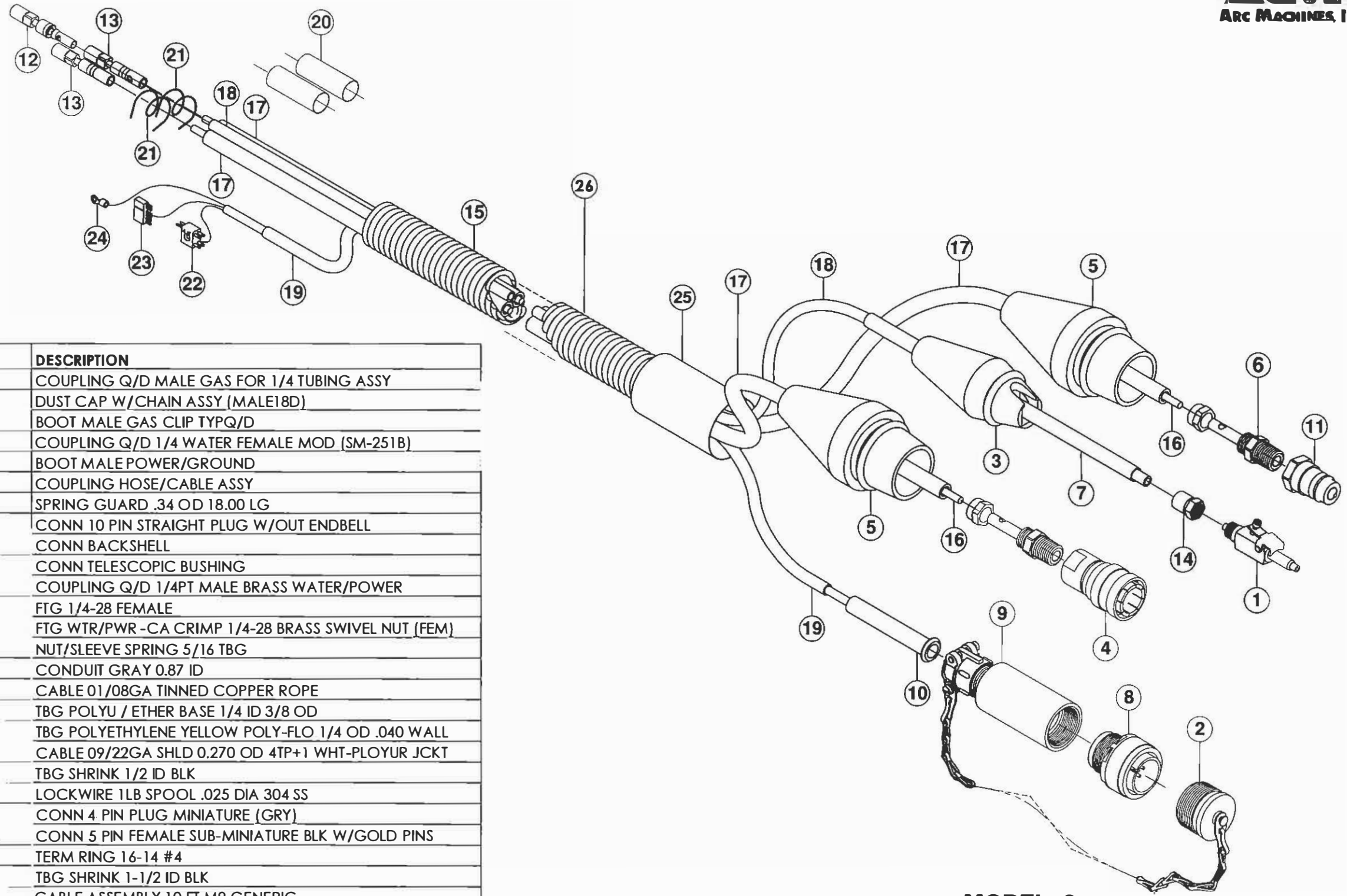
To be used as reference only

MODEL 9-750
IPB 0905235
CLAMP ASSY COVER SIDE

ISSUED: 12 DEC 2006
REVISED: -

TO ORDER USE PART NUMBER.
PRICE, PART NUMBER AND DESCRIPTION
SUBJECT TO CHANGE WITHOUT NOTICE.

Property of Arc Machines, Inc.



ITEM NO.	QTY.	PART NO.	DESCRIPTION
1	1	1351109-01	COUPLING Q/D MALE GAS FOR 1/4 TUBING ASSY
2	1	1350110-04	DUST CAP W/CHAIN ASSY (MALE18D)
3	1	42060805-04	BOOT MALE GAS CLIP TYPQ/D
4	1	42060800-02	COUPLING Q/D 1/4 WATER FEMALE MOD (SM-251B)
5	2	42060804-01	BOOT MALE POWER/GROUND
6	2	42060800-07	COUPLING HOSE/CABLE ASSY
7	1	AS200718	SPRING GUARD .34 OD 18.00 LG
8	1	MS3106E18-1PF42	CONN 10 PIN STRAIGHT PLUG W/OUT ENDBELL
9	1	G1501N186A3A	CONN BACKSHELL
10	1	MS39056-3	CONN TELESCOPIC BUSHING
11	1	SM-252B	COUPLING Q/D 1/4PT MALE BRASS WATER/POWER
12	1	2PF1	FTG 1/4-28 FEMALE
13	2	ARC-1881	FTG WTR/PWR -CA CRIMP 1/4-28 BRASS SWIVEL NUT (FEM)
14	1	261-PG-04	NUT/SLEEVE SPRING 5/16 TBG
15	1	DUCT-0,87-50-G	CONDUIT GRAY 0.87 ID
16	2	NER7-95-36T	CABLE 01/08GA TINNED COPPER ROPE
17	2	42090806-01	TBG POLYU / ETHER BASE 1/4 ID 3/8 OD
18	1	44-P-YELLOW	TBG POLYETHYLENE YELLOW POLY-FLO 1/4 OD .040 WALL
19	1	CWT11943	CABLE 09/22GA SHLD 0.270 OD 4TP+1 WHT-PLOYUR JCKT
20	2	M23053/5-108-0	TBG SHRINK 1/2 ID BLK
21	2	MS20995C25	LOCKWIRE 1LB SPOOL .025 DIA 304 SS
22	1	JF2P2SCD	CONN 4 PIN PLUG MINIATURE (GRY)
23	1	7052	CONN 5 PIN FEMALE SUB-MINIATURE BLK W/GOLD PINS
24	1	34119	TERM RING 16-14 #4
25	1	M23053/5-111-0	TBG SHRINK 1-1/2 ID BLK
26	-	13090800-01	CABLE ASSEMBLY 10 FT M9 GENERIC

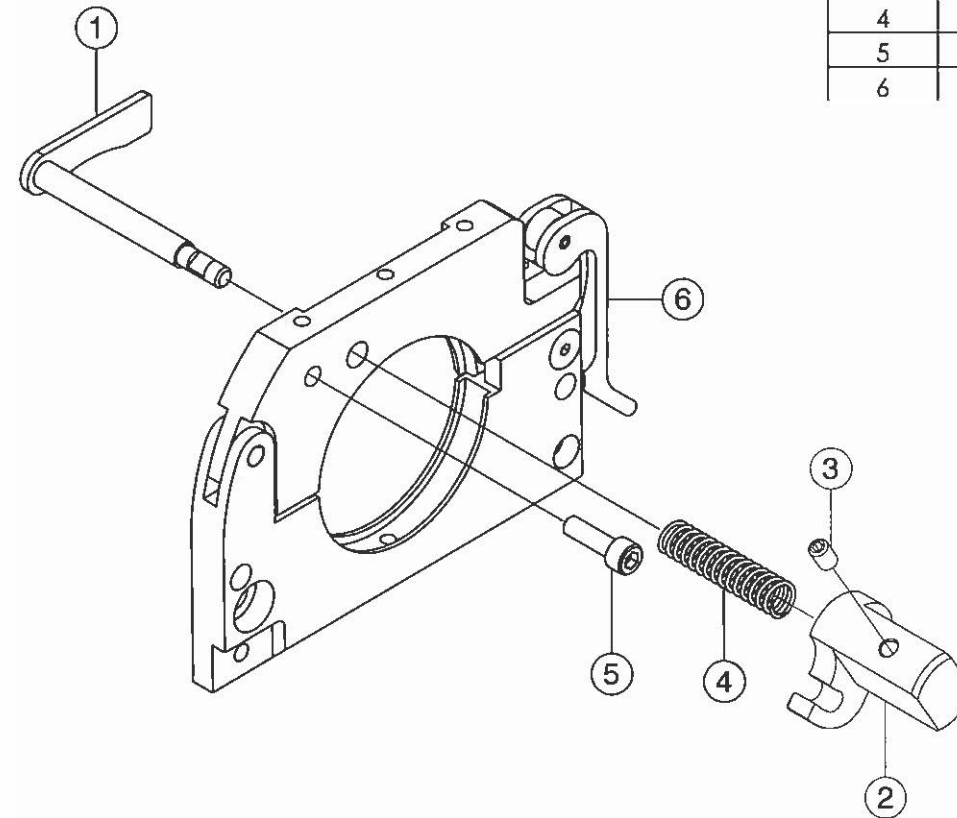
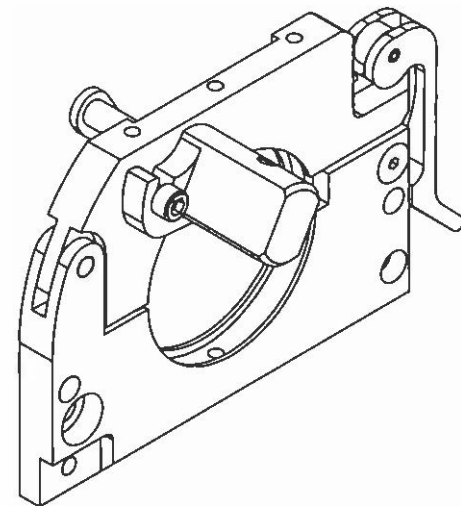
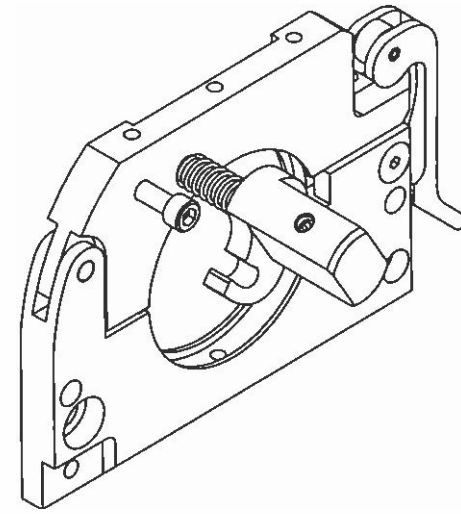
To be used as reference only

**MODEL 9
IPB 090800
CABLE ASSEMBLY**

ISSUED: 3 JAN 2005
REVISED: 5 OCT 2010

TO ORDER USE PART NUMBER.
PRICE, PART NUMBER AND DESCRIPTION
SUBJECT TO CHANGE WITHOUT NOTICE.

Property of Arc Machines, Inc.
**THIS IPB SUPERSEDES ALL OTHER IPB'S
REFERENCING 13090800-01 CABLE ASSEMBLY**



ITEM NO.	QTY.	PART NO.	DESCRIPTION
1	1	130905117-01	ARM LOCATING BRAZED
2	1	420905284-01	KNOB
3	1	SSS04-40-18NPCU	SCREW SET SKT 4-40 3/16 L CUPT
4	1	C0210-022-1250S	SPRING CPRSN .21D 1.25L .022W
5	1	SCS04-40-0.37NP	SCREW CAP SKT 4-40 3/8 L
6	1	CLAMP HOUSING COVER SIDE	(REF.)

To be used as reference only

MODEL 9-750
IPB 0905119
LOCATING ARM KIT / INSTALLATION

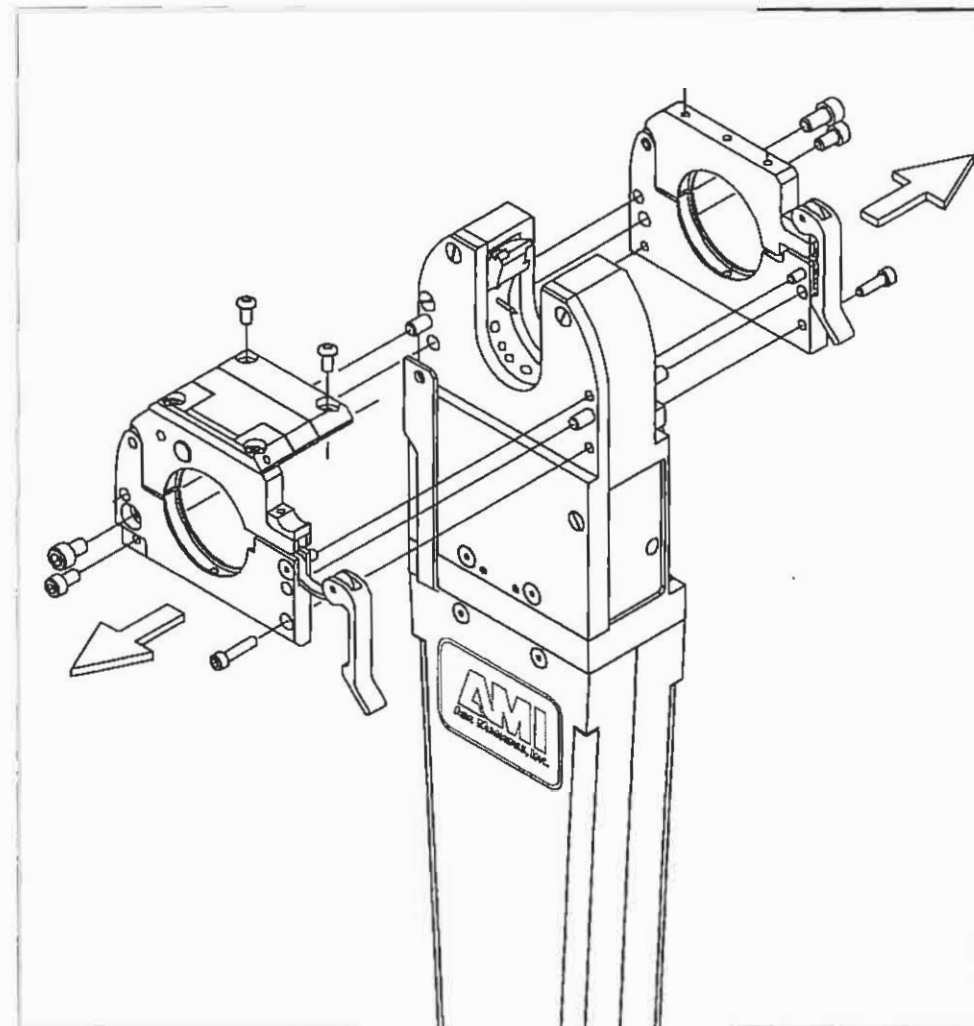
ISSUED: 5 JAN 2005
REVISED:

TO ORDER USE PART NUMBER.
PRICE, PART NUMBER AND DESCRIPTION
SUBJECT TO CHANGE WITHOUT NOTICE.

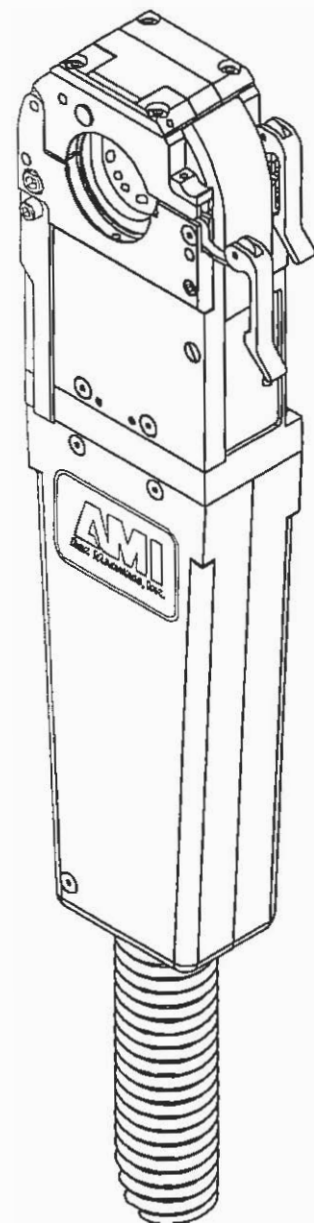
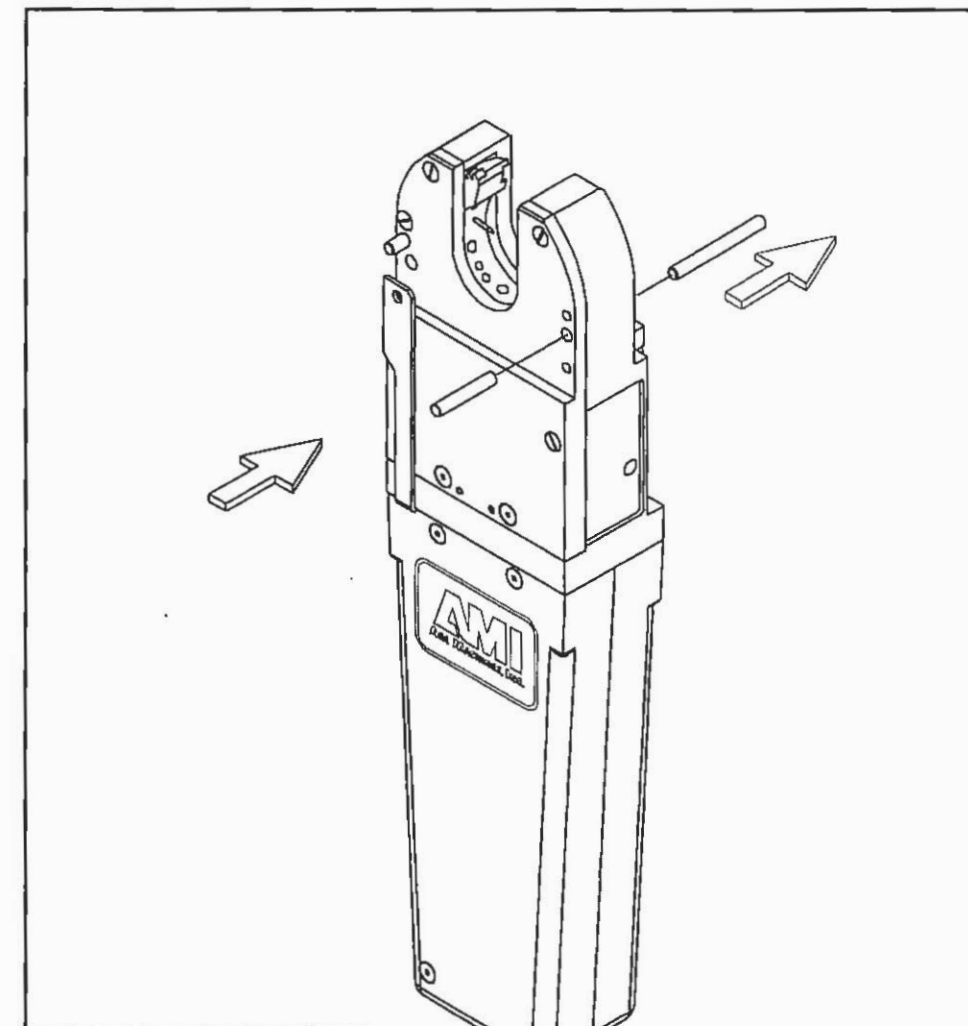
Property of Arc Machines, Inc.

MODEL 9-750 CONVERSION TO MODEL 9CT-750 INSTRUCTIONS

1. REMOVE BOTH STANDARD CLAMP HOUSING ASSEMBLIES
AND COVER FLIP TOP ASSEMBLY FROM WELD HEAD.



2. REMOVE ONE G-10 PIN AND REPLACE WITH PIN FROM KIT,
AS SHOWN.



MODEL 9-750

To be used as reference only

Property of Arc Machines, Inc.

DWG# 750028

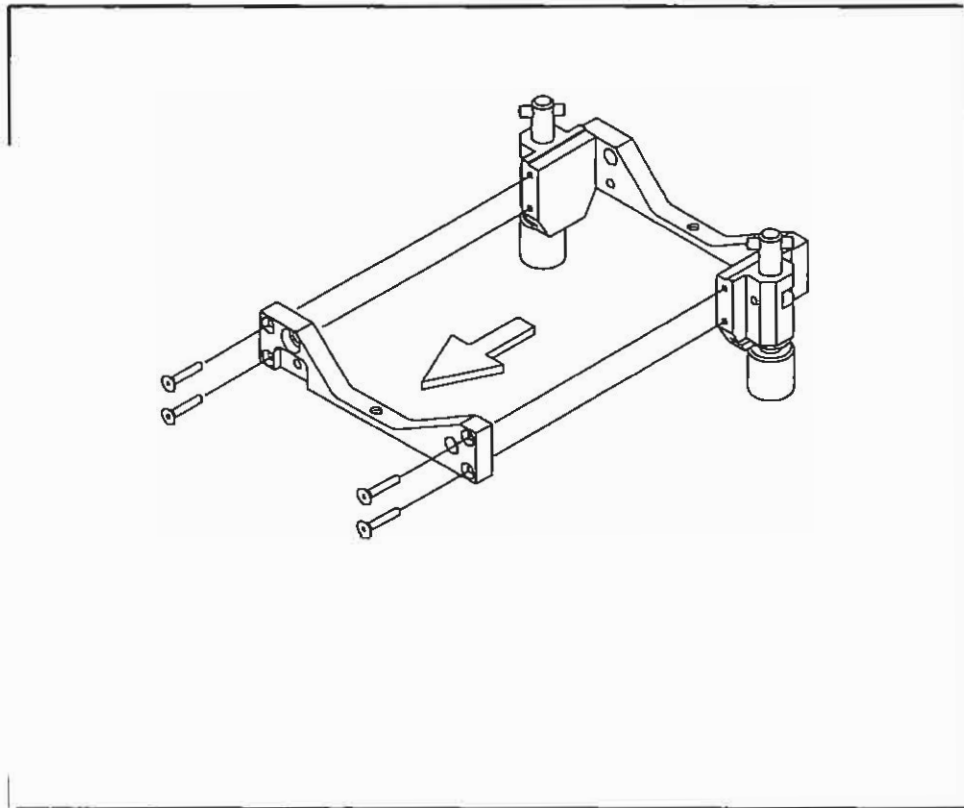
ISSUED: 8 MAY 1990
REVISED: 10 JAN 2005

PAGE 1 OF 2

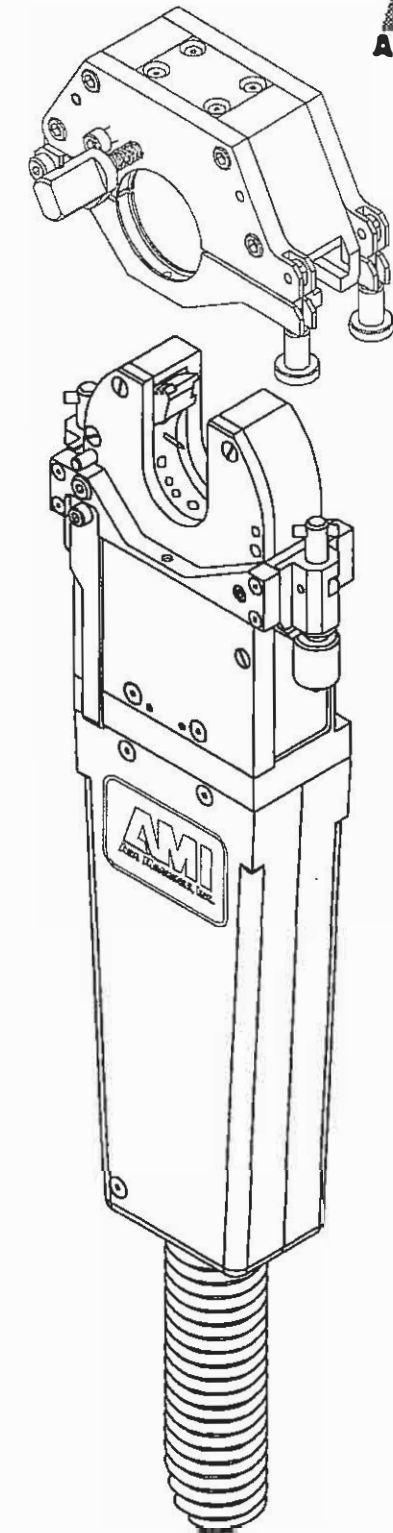
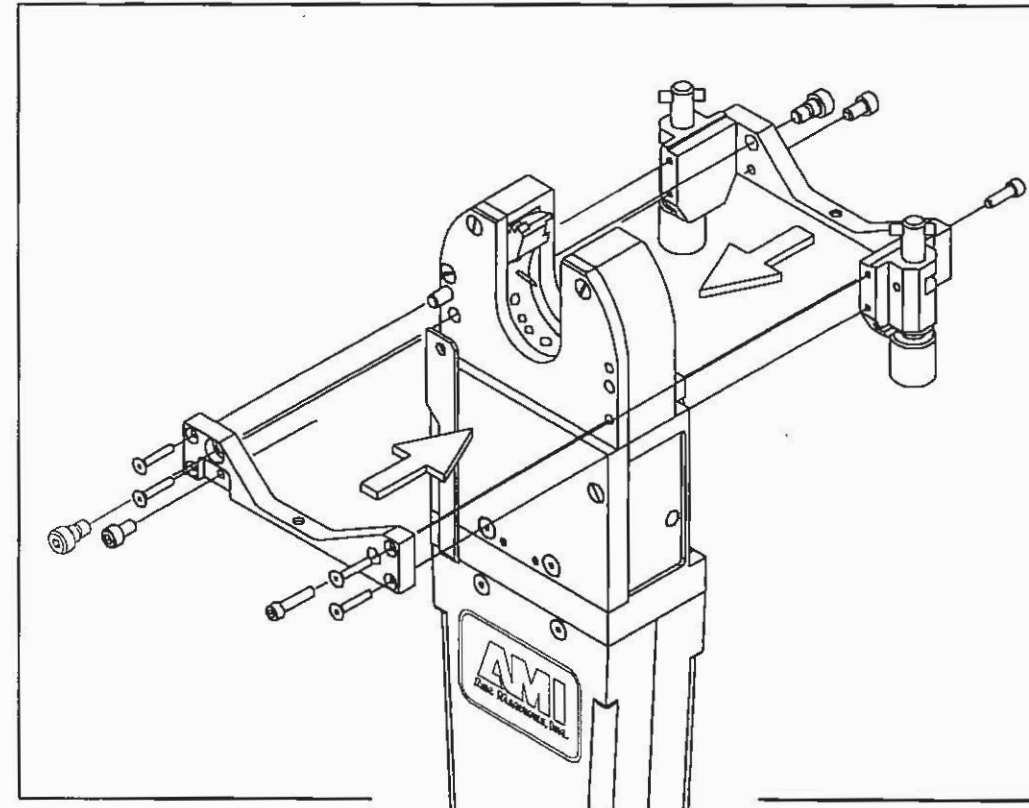
MODEL 9-750 CONVERSION TO MODEL 9CT-750 INSTRUCTIONS



3. SPLIT ADAPTER HOUSING INTO TWO SECTIONS AS SHOWN.



4. MOUNT THE TWO PIECES OF THE ADAPTER HOUSING TO THE WELD HEAD USING THE SHOULDER SCREWS (2 PLACES) FROM THE KIT AND THE REMAINING ORIGINAL SCREWS.



MODEL 9CT-750

To be used as reference only

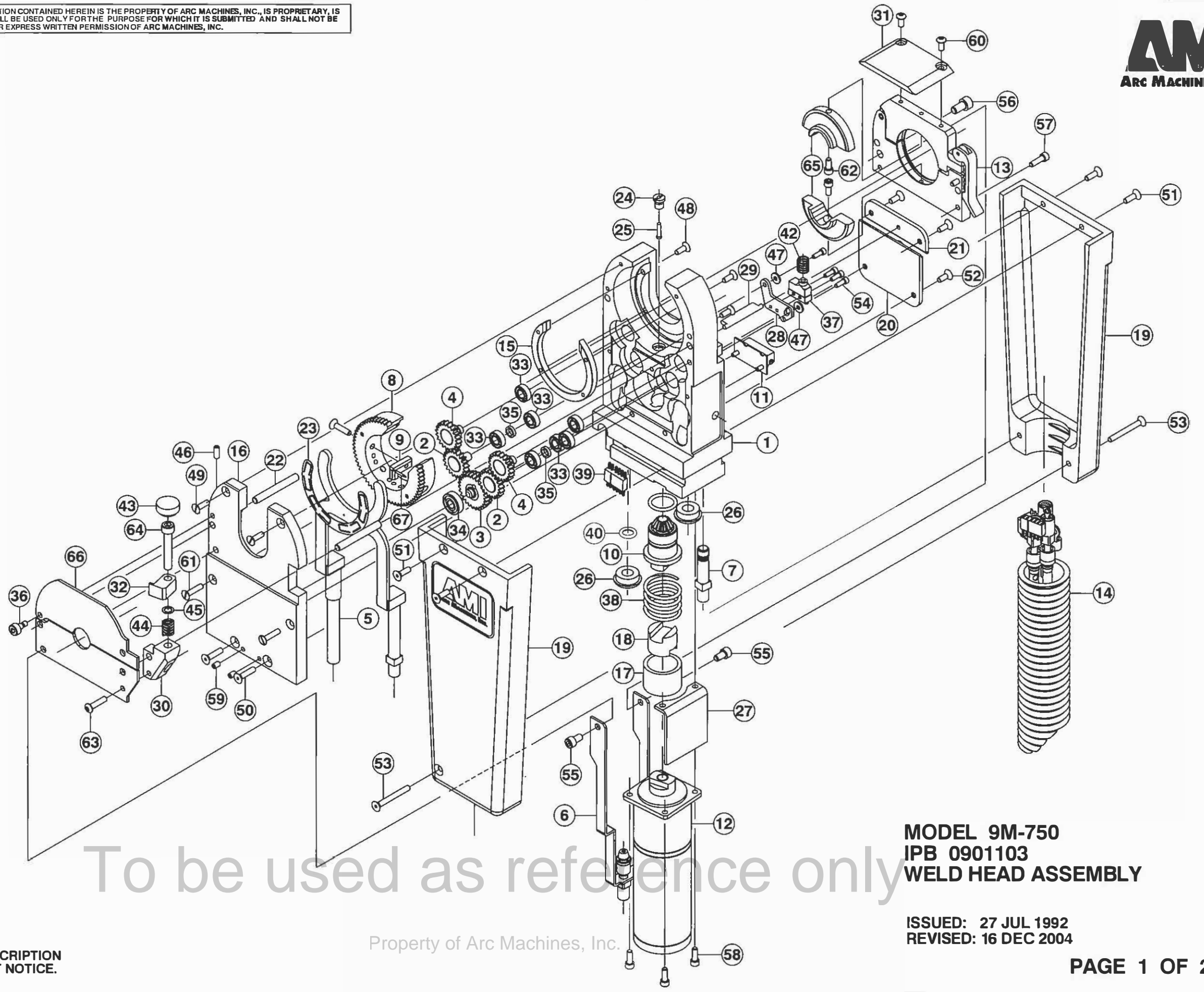
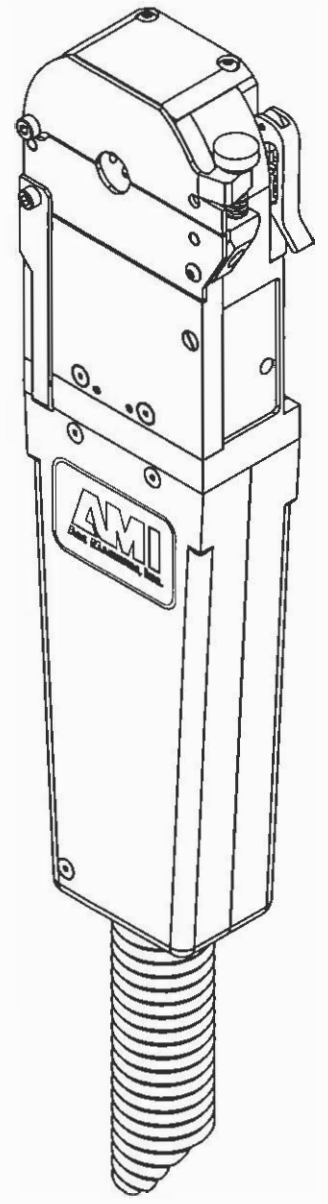
Property of Arc Machines, Inc.

DWG# 750028

ISSUED: 8 MAY 1990
REVISED: 10 JAN 2005

PAGE 2 OF 2

THIS DOCUMENT OR DRAWING AND THE INFORMATION CONTAINED HEREIN IS THE PROPERTY OF ARC MACHINES, INC., IS PROPRIETARY, IS SUBMITTED AND RECEIVED IN CONFIDENCE, SHALL BE USED ONLY FOR THE PURPOSE FOR WHICH IT IS SUBMITTED AND SHALL NOT BE COPIED IN WHOLE OR IN PART WITHOUT THE PRIOR EXPRESS WRITTEN PERMISSION OF ARC MACHINES, INC.

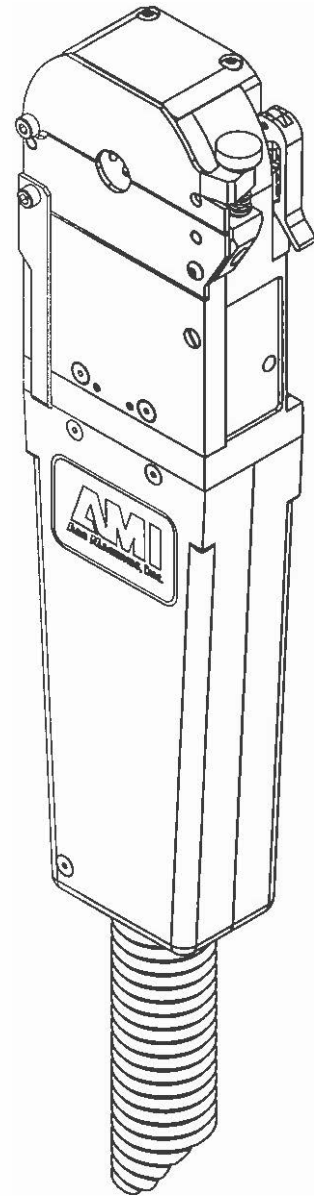


MODEL 9M-750
IPB 0901103
WELD HEAD ASSEMBLY

ISSUED: 27 JUL 1992
REVISED: 16 DEC 2004

TO ORDER USE PART NUMBER.
PRICE, PART NUMBER AND DESCRIPTION
SUBJECT TO CHANGE WITHOUT NOTICE.

Property of Arc Machines, Inc.



ITEM NO.	QTY.	PART NO.	DESCRIPTION	ITEM NO.	QTY.	PART NO.	DESCRIPTION
1	1	42090185-01	HOUSING MAIN	42	1	MM-9	SPRING CPRSN .25D .31L .020W
2	2	13090618-01	GEAR IDLER ASSY	43	1	99-601-7	KNOB KNURL #8 SCREW PLASTIC BLK
3	1	13090618-02	GEAR DRIVE ASSY	44	1	S-1112	SPRING CPRSN .26D .37L .032W
4	2	13090618-03	GEAR IDLER ASSY	45	1	DB3D49	SPACER .167ID .25OD .020T SS
5	1	130907123-01	CONDUCTOR SHOE BRAZED	46	1	SSS04-40-31NPCU	SCREW SET SKT 4-40 5/16 L CUPT
6	1	13090750-01	GROUND STRAP	47	2	W02ZP-FL	WASHER FL # 2
7	1	13090803-01	TUBE FTG GAS	48	4	SFLO4-40-0.31NY	SCREW FLH SLT 4-40 5/16 L NYL
8	1	13090787-01	ROTOR ASSY	49	2	SFLO4-40-0.37NY	SCREW FLH SLT 4-40 3/8 L NYL
9	1	130907102-01	HOLDER TUNGSTEN EXTENDER	50	3	SFS04-40-0.50NP	SCREW FLH SKT 4-40 1/2 L
10	1	13090602-07	GEAR PINION DRIVE ASSY	51	4	SFS04-40-0.37NP	SCREW FLH SKT 4-40 3/8 L
11	1	130901132-01	RETAINER TRIM POT ASSY	52	4	SFS04-40-0.31NP	SCREW FLH SKT 4-40 5/16 L
12	1	13090602-01	MOTOR DRIVE ASSY	53	2	SFS04-40-1.00NP	SCREW FLH SKT 4-40 1.00 L
13	1	130905234-01	CLAMP HOUSING HOUSING SIDE	54	4	SCS02-56-0.25NP	SCREW CAP SKT 2-56 1/4 L
14	1	13090800-01	CABLE M9 10 FT	55	2	SCS06-32-0.25SP	SCREW CAP SKT 6-32 1/4 L
15	1	420907123-01	GUIDE RING	56	1	SCS06-32-0.25SP	SCREW CAP CKT 6-32 1/4 L
16	1	420901117-01	COVER HOUSING	57	1	SCS04-40-0.37NP	SCREW CAP SKT 4-40 3/8 L
17	1	42090602-04	SPACER SPRING	58	4	SCS04-40-0.31NP	SCREW CAP SKT 4-40 5/16 L
18	1	42090602-03	COUPLING INSULATING DERLIN	59	2	SSS04-40-18NPCU	SCREW SET SKT 4-40 3/16 L CUPT
19	2	42090104-01	HANDLE ONE-HALF	60	2	SBS04-40-0.25NP	SCREW BTH SKT 4-40 1/4 L
20	1	42091106-01	COVER LIMIT SWITCH LARGE CLEAR	61	2	SFLO4-40-0.50NY	SCREW FLH SLT 4-40 1/2 L NYL
21	1	42091106-02	COVER LIMIT SWITCH SMALL CLEAR	62	2	SCS04-40-0.25NP	SCREW CAP SKT 4-40 5/16 L
22	2	42090164-13	PIN G-10 0.156 x 1.290	63	1	SBS04-40-0.50NP	SCREW BTH SKT 4-40 1/2 L
23	1	420907216-01	PLATE BACKING	64	1	SCS08-32-1.00NP	SCREW CAP SKT 8-32 1.00 L
24	1	42090716-02	BUSHING PUSH ROD	65	2	420905214-00 [REF.]	CLAMP INSERT [ORDER BY SIZE]
25	1	42090716-01	PUSH ROD LIMIT SW	66	1	130905183-03 [REF.]	CLAMP PLATE [ORDER BY SIZE]
26	2	420901126-02	GROMMET	67	1	ELECTRODE	[REF.]
27	1	42091102-04	INSULATOR SKIRT				
28	1	42091103-01	PLATE MTG LIMIT SWITCH				
29	1	42091107-01	LEVER LIMIT SWITCH				
30	1	420905308-01	BRACKET CLAMP CLOSURE				
31	1	420905312-01	COVER VIEWPORT CLEAR				
32	1	420905308-02	LATCH CLAMP				
33	7	SSRI-6632LLRA3P25LY[BEARING BALL .18 .37 [15]				
34	1	SSR-3LLRA3P25LY13	BEARING BALL .18 .50				
35	2	DB6D9	SPACER SHAFT .18ID .25D .062T				
36	1	44D10	SCREW SHLDR SKT 4-40 1/8D 1/8				
37	1	MMGGD1D0C	SWITCH LIMIT PLUNGER				
38	1	S-939	SPRING CPRSN .81D .70L .072W				
39	1	7051	CONN 5 PIN MALE				
40	1	2-010-S604-70	O RING .238 ID .070 W SILICONE				
41	1	2-014-S604-70	O RING .489 ID .070 W VITON				

To be used as reference only

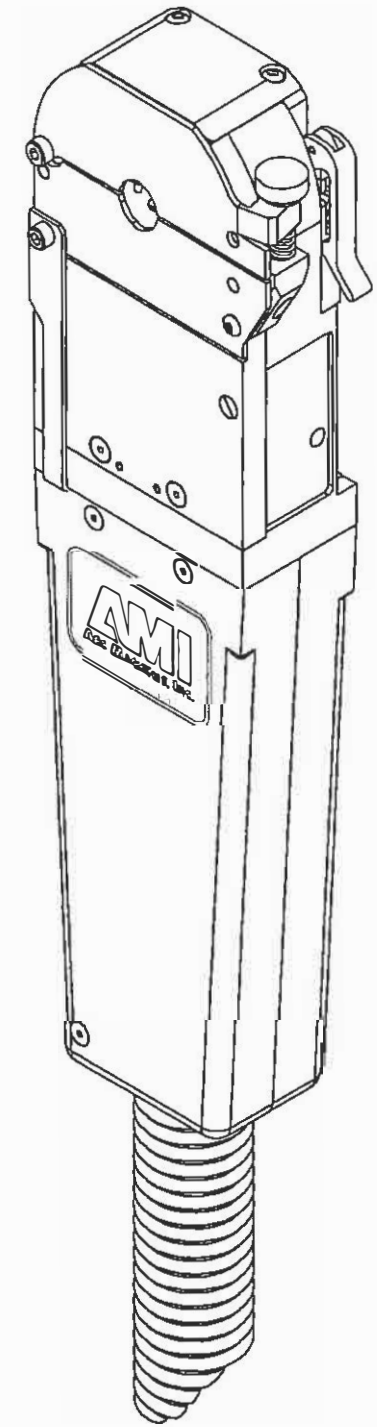
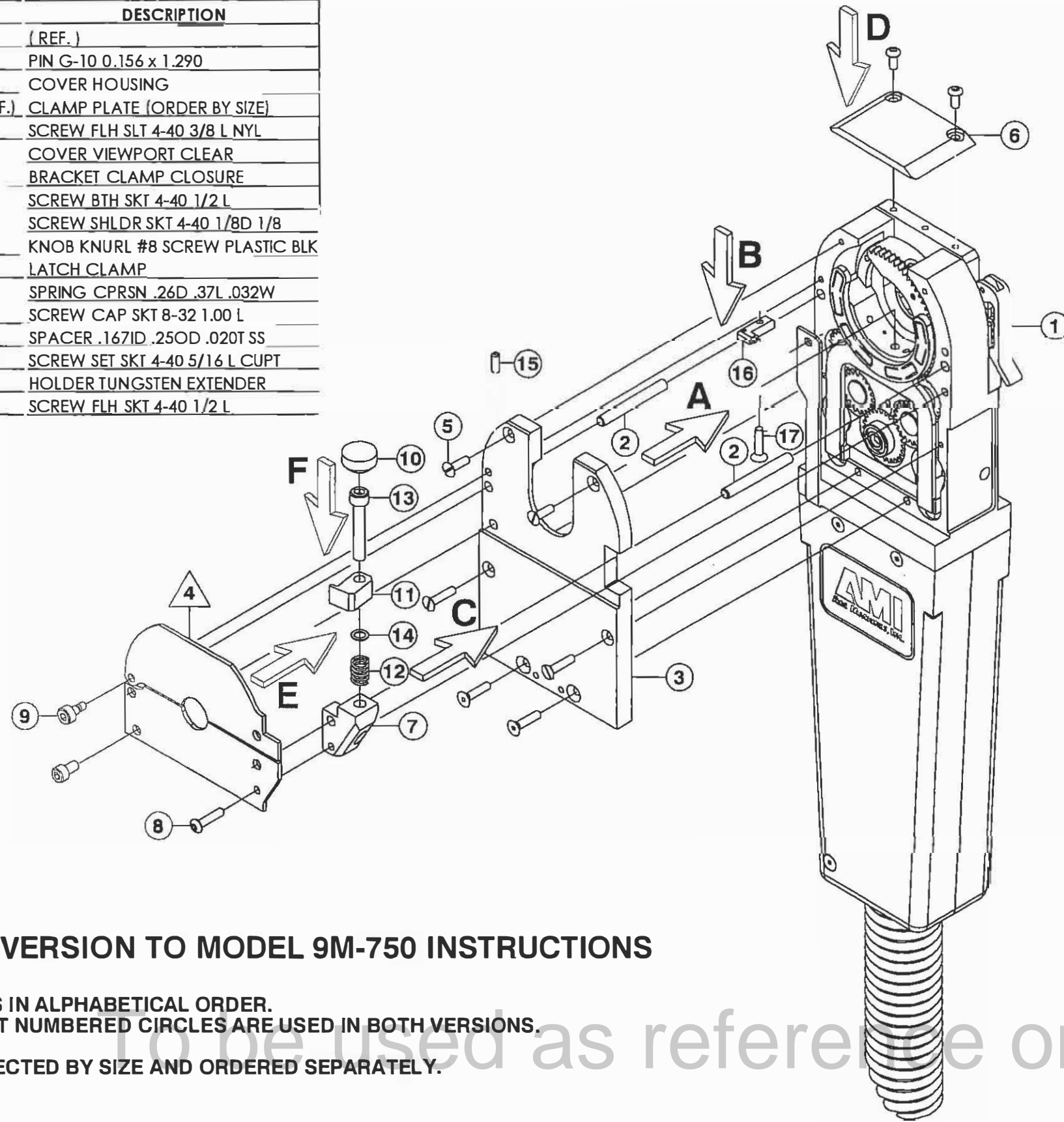
**MODEL 9M-750
IPB 0901103
WELD HEAD ASSEMBLY**

TO ORDER USE PART NUMBER.
PRICE, PART NUMBER AND DESCRIPTION
SUBJECT TO CHANGE WITHOUT NOTICE.

Property of Arc Machines, Inc.

ISSUED: 27 JUL 1992
REVISED: 16 DEC 2004

ITEM NO.	QTY.	PART NO.	DESCRIPTION
1	1	WELD HEAD	(REF.)
2	2	42090164-13	PIN G-10 0.156 x 1.290
3	1	420901117-01	COVER HOUSING
4	1	130905183-03 (REF.)	CLAMP PLATE (ORDER BY SIZE)
5	2	SFL04-40-0,37NY	SCREW FLH SLT 4-40 3/8 L NYL
6	1	420905312-01	COVER VIEWPORT CLEAR
7	1	420905308-01	BRACKET CLAMP CLOSURE
8	1	SBS04-40-0,50NP	SCREW BTH SKT 4-40 1/2 L
9	1	44D10	SCREW SHLDR SKT 4-40 1/8D 1/8
10	1	99-601-7	KNOB KNURL #8 SCREW PLASTIC BLK
11	1	420905308-02	LATCH CLAMP
12	1	S-1112	SPRING CPRSN .26D .37L .032W
13	1	SCS08-32-1.00NP	SCREW CAP SKT 8-32 1.00 L
14	1	DB3D49	SPACER .167ID .25OD .020T SS
15	1	SSS04-40-31NPCU	SCREW SET SKT 4-40 5/16 L CUPT
16	1	130907102-01	HOLDER TUNGSTEN EXTENDER
17	1	SFS04-40-0,50NP	SCREW FLH SKT 4-40 1/2 L



MODEL 9-750 CONVERSION TO MODEL 9M-750 INSTRUCTIONS

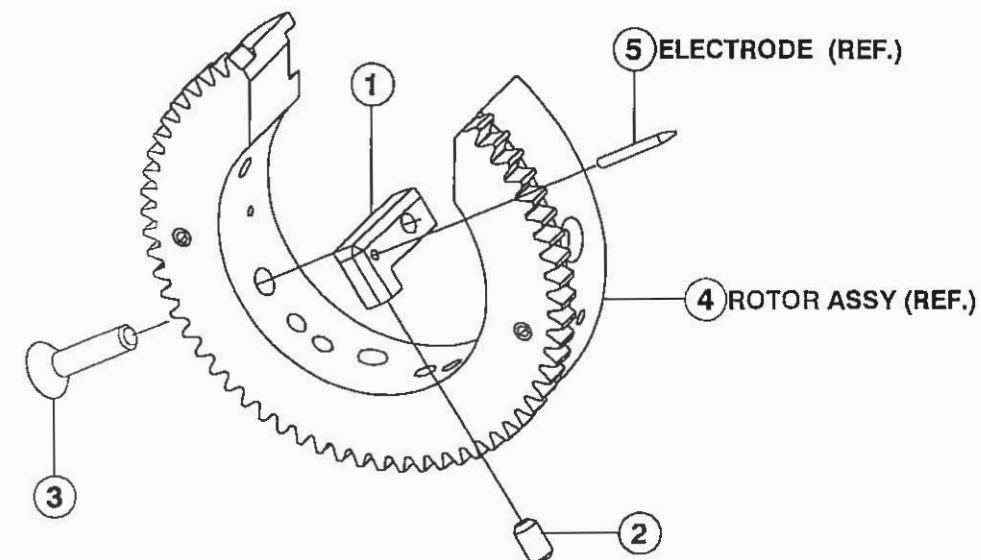
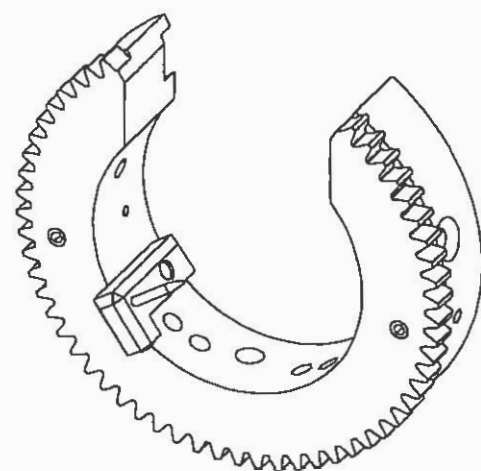
- 2. INSTALL PARTS IN ALPHABETICAL ORDER.
- 3. ITEMS WITHOUT NUMBERED CIRCLES ARE USED IN BOTH VERSIONS.
- △ 4. MUST BY SELECTED BY SIZE AND ORDERED SEPARATELY.

MODEL 9M-750

MODEL 9-750
 IPB 0905185
 KIT CONVERSION M9-750 TO M9M-750

ISSUED: 27 JUL 1992
 REVISED: 12 JAN 2005

TO ORDER USE PART NUMBER.
 PRICE, PART NUMBER AND DESCRIPTION
 SUBJECT TO CHANGE WITHOUT NOTICE.



ITEM NO.	QTY.	PART NO.	DESCRIPTION
1	1	420907190-01	HOLDER TUNGSTEN EXTENDER
2	1	SSS04-40-1BNPCU	SCREW SET SKT 4-40 3/16 L CUPT
3	1	SFS04-40-0,50NP	SCREW FLH SKT 4-40 1/2 L
4	1	13090787-01	ROTOR ASSY
5	1	ELECTRODE	(REF.)

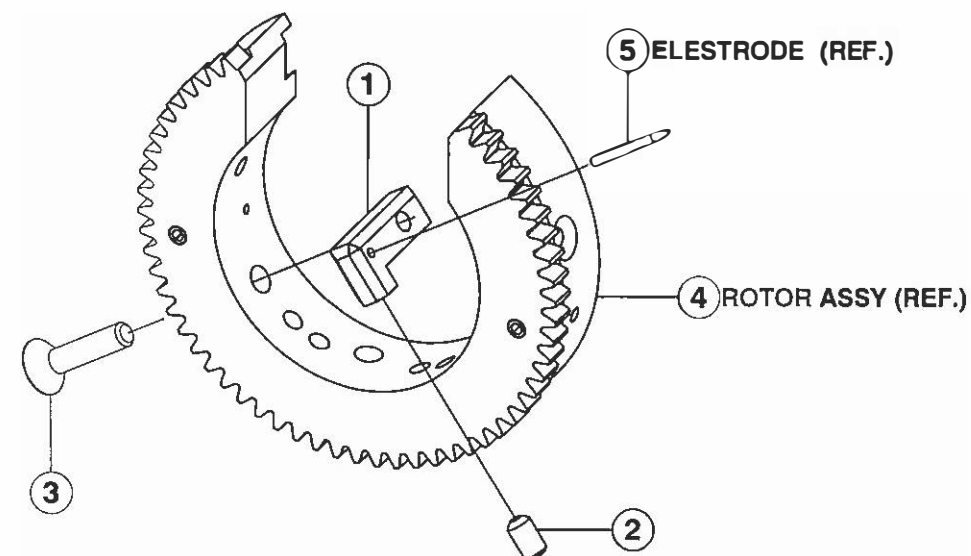
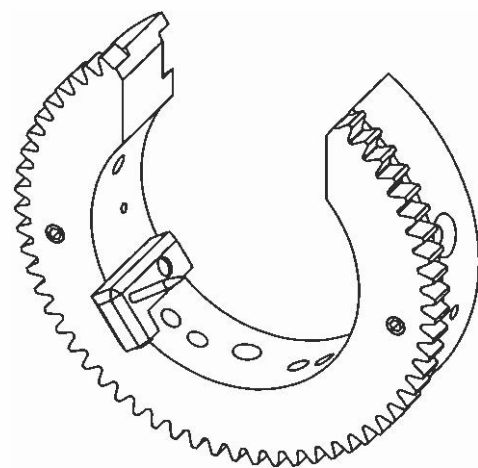
To be used as reference only

Property of Arc Machines, Inc.

MODEL 9M-750
IPB 0907102
HOLDER ELECTRODE EXTENDER
ASSEMBLY

ISSUED: 17 JAN 2005
REVISED:

TO ORDER USE PART NUMBER.
PRICE, PART NUMBER AND DESCRIPTION
SUBJECT TO CHANGE WITHOUT NOTICE.



ITEM NO.	QTY.	PART NO.	DESCRIPTION
1	1	420907190-01	HOLDER TUNGSTEN EXTENDER
2	1	SSS04-40-18NPCU	SCREW SET SKT 4-40 3/16 L CUPT
3	1	SFS04-40-0,50NP	SCREW FLH SKT 4-40 1/2 L
4	1	13090787-01	ROTOR ASSY
5	1	ELECTRODE	[REF.]

To be used as reference only

MODEL 9M-750
IPB 0907102
HOLDER ELECTRODE EXTENDER
ASSEMBLY

ISSUED: 17 JAN 2005
REVISED:

TO ORDER USE PART NUMBER.
PRICE, PART NUMBER AND DESCRIPTION
SUBJECT TO CHANGE WITHOUT NOTICE.

Property of Arc Machines, Inc.

